



910/GIN Winner

Self loading trolley for incubators



FEATURES

Designed to load and transport incubators on rescue vehicles. This trolley is part of "Winner" range, keeping the all same features. Made of anodized aluminium.

MAIN FEATURES

Pediatric	
Height (cm)	87,5
Max loading height (cm)	65
Min loading height (cm)	45
Folded height (cm)	26
Width (cm)	56
Length (cm)	194
Length with folded trolley (cm)	162
Weight (kg)	28
Material	Anodized aluminium
Loading capacity (kg)	170

SEE ALSO



Winner 910/GIN PROOF
Self loading trolley for incubators
predisposed for certified fixing
system

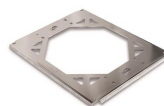
ACCESSORIES



Rear fixing system
Rear fixing system for roll-in H=148
mm



Front blocking device
Front blocking device for automatic
loading stretcher



12048
Certified interface for incubator
fixation for self loading trolleys



12050
Extended trolley incubator
interface
